

Sheerweave 4510



Description:

SW4510 is a revolutionary 2x2 sunscreen manufactured using DOW ECOLIBRIUM bio based plasticizers, rather than fossil fuel based plasticizers. DOW Ecolibrium does not detract from the sunscreen's appearance or performance, and provides a sustainable green alternative to traditional sunscreens, without the PVC smell.

Key Features:

- Width: 3200mm
- Suitable for : Roller, Roman & Panel Blinds, Internal & External use
- Colours: 6
- Quality: Screen

Specification: (1ECO4510)

- Composition: 25% Polyester, 75% Vinyl on Polyester (over 50% of compound components are derived from crop based feed stocks and minerals. Over 2/3 of total compound is derived from non fossil fuel based feed stocks)
- Openness Factor: 10%
- UV Blockage: 90% approx.
- Weave: Basketweave
- Fire Classification: AS1530 Part III | California US Title 19 (small scale) | NFPA 701 - 2004TM#1 (smallscale) | BS 5867 2008 Part II Type B
- Thickness: 0.69mm
- Weight: 436 g/m²
- Cutting: Ultrasonic, Crush Cut

Solar Optical Properties: Fabrics installed internally zero-degree profile angle

Colour	Solar Optical Properties				Shading Coefficient	
	Ts	Rs	As	Tv	3mm CL	6mm CL
White	20	69	11	23	0.32	0.32
White Linen	19	62	19	23	0.37	0.37
White Grey	15	50	35	20	0.44	0.44
White Stone	17	58	25	22	0.39	0.39
Charcoal	13	3	84	19	0.76	0.72
Charcoal Gey	12	11	77	17	0.71	0.67

Ts: Solar Transmittance
 Rs: Solar Reflectance
 As: Solar Absorptance
 Tv: Visual Transmittance
 3mm CL: 3mm Clear Glass
 6mm CL: 6mm Clear Glass

Care: Fabric should be regularly dusted / vacuumed as appropriate. May be wiped with warm water and mild detergent.

Warranty: 10 year interior | 5 year exterior



Colour Range *



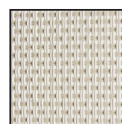
SW4510



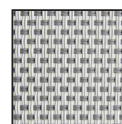
white



white linen



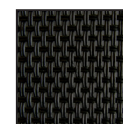
white stone



white grey



charcoal grey



charcoal

*colours representative only